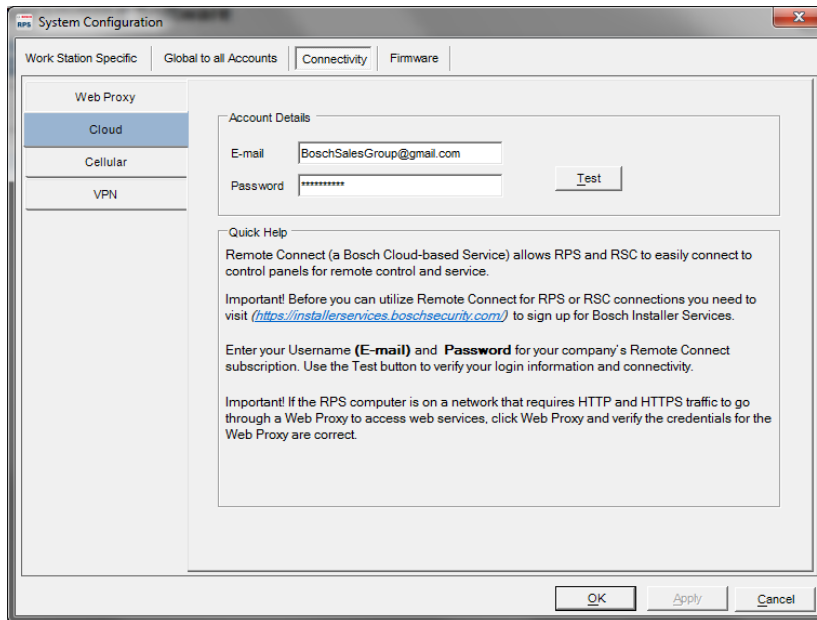
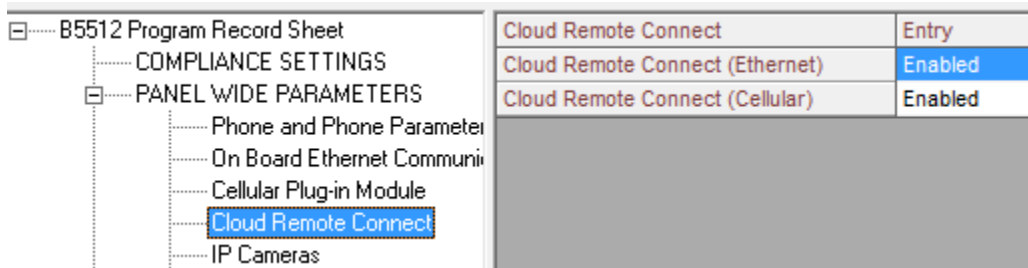


## Remote Connect via Cloud Activation in RPS 6.06+

- 1.) Make sure you have the latest version of RPS 6.03 or later
- 2.) From the MENU bar at the top of RPS select Config and then System
- 3.) Then select the Connectivity tab at the top and the Cloud on the left side.



- 4.) Enter your cloud credentials listed in the Installer Services Portal or created through the Remote Portal. Click test to verify they are working. Click OK to exit this screen.
- 5.) With your panel programming make sure that Cloud is enable for Ethernet and Cellular.  
 Panel Wide Parameters> Cloud Remote Connect> Enable

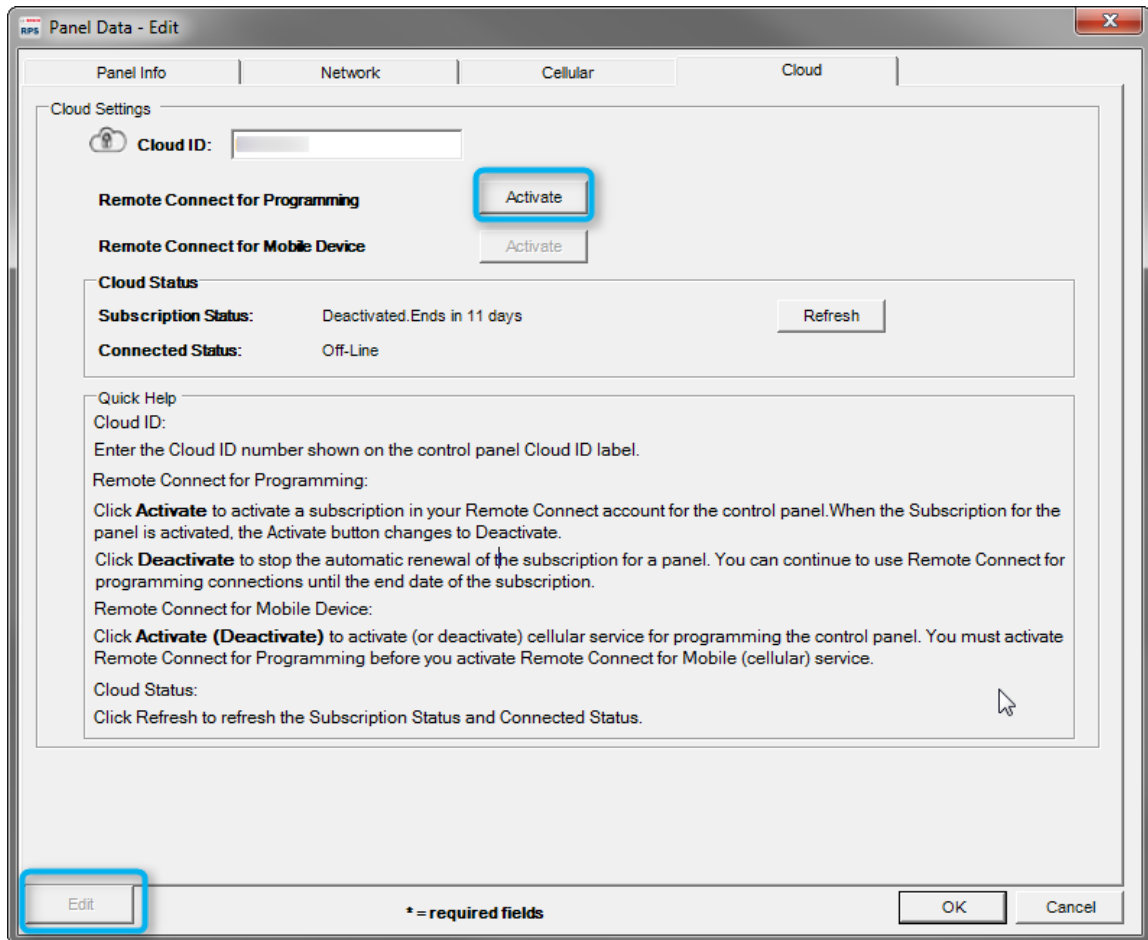


- 6.) Save and Send change to your panel. Close your panel Programming
- 7.) From the Panel list right click the panel you want to activate and select Cloud Activation.

[Installer.services@us.bosch.com](mailto:Installer.services@us.bosch.com)

+1 (800)-289-0096 option 6.

- 8.) Click edit and enter the cloud id printed on your panel. Click activate on the services you would like to use. Your cloud panel is now active and will be visible in the Remote Portal.



The screenshot shows the 'Panel Data - Edit' window with the 'Cloud' tab selected. The 'Cloud Settings' section includes a 'Cloud ID' input field, two 'Activate' buttons for 'Remote Connect for Programming' and 'Remote Connect for Mobile Device', and a 'Cloud Status' section with 'Subscription Status' (Deactivated, Ends in 11 days) and 'Connected Status' (Off-Line). A 'Refresh' button is also present. A 'Quick Help' section provides instructions for entering the Cloud ID and activating/deactivating services. The 'Edit' button at the bottom left is highlighted with a blue box. The bottom of the window contains an asterisk legend (\* = required fields) and 'OK' and 'Cancel' buttons.

\* Remote Connect via Cloud requires open port 443 and bidirectional access to these addresses:

- IPv4 address for dm20.cbs.boschsecurity.com  
Domain Name Server: 52.28.103.201
- IPv4 address for dm120.cbs.boschsecurity.com  
Domain Name Server: 18.196.140.76
- IPv4 address for dm121.cbs.boschsecurity.com  
Domain Name Server: 3.215.241.124

[Installer.services@us.bosch.com](mailto:Installer.services@us.bosch.com)

+1 (800)-289-0096 option 6.