

---

# *RAPID***ALERT**

# INSTALLATION GUIDE

---

## Step-by-Step Installation Instructions



---

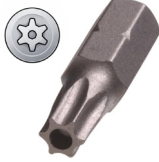
This guide provides step-by-step instructions for installing the RapidAlert unit. It is written for installers with little or no technical experience. **Read the entire guide before beginning installation.**

---

## WHAT'S INCLUDED:



(A) RapidAlert Unit



(B) Security Torx Bit



(C) Pull Station Key



(D) Antenna



(E) Drywall Anchors (4)



(F) Plastic Anchors for Masonry (4)



(G) Mounting Screws (4)



(H) Cord Grip Connector



(I) Power Cable



(J) Plug-in Transformer



(K) 6 VDC Batteries (2)



(L) Yellow Battery Jumper



(M) Installation Template



Printed Installation Instructions

## TOOLS NEEDED



Screwdrivers (Flathead & Phillips)

Wire strippers/cutters

Hammer

Drill (hammer drill if mounting to masonry)



Level

1/4 inch drill bit



Painter's Tape

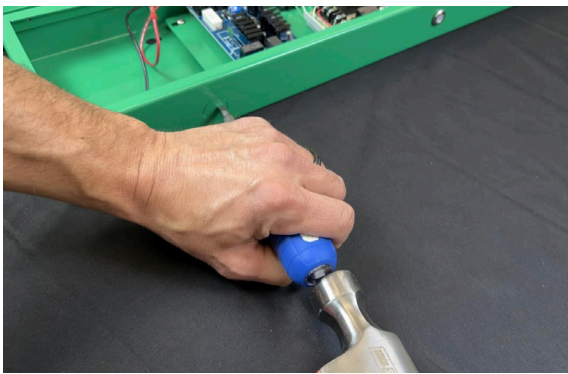
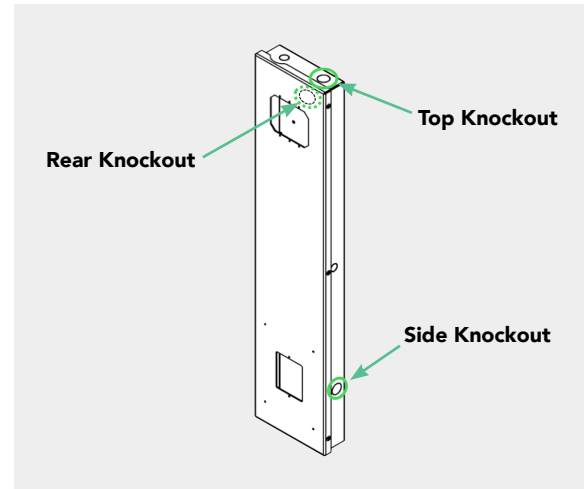
Optional: 1-1/2 inch hole saw or drywall knife (for rear cable entry)

Tape Measure

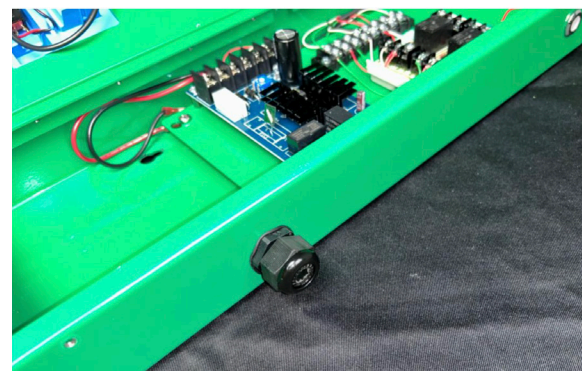
# 01

## PREPARE THE RAPIDALERT CABINET

- 1 Unbox the RapidAlert unit and leave the protective plastic film in place.
- 2 Using the supplied security Torx bit (B), remove the three security screws on the right side of the cabinet and set them aside.
- 3 Select the cable entry knockout you plan to use (top, side, or rear) and remove it.

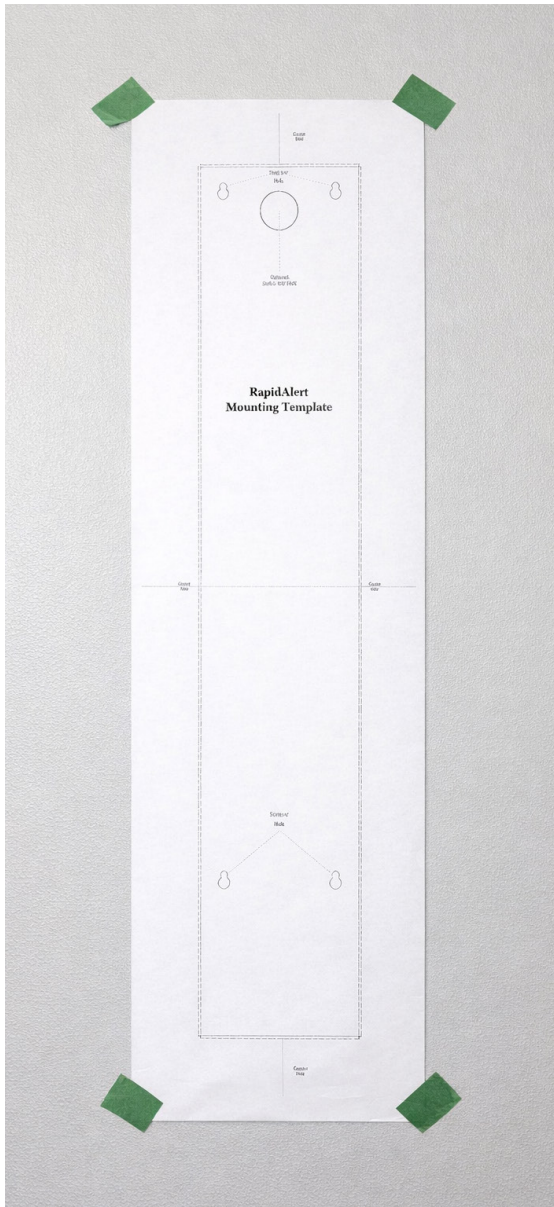


Lightly tap the knockout with the hammer and flathead screwdriver if needed.



- 4 Install the cord grip connector (H) into the knockout and secure it with the locknut from inside the cabinet.

## 02 MARK AND DRILL MOUNTING HOLES



- 1 Position the included installation template (M) on the wall using painter's tape.

**NOTE:** The recommended mounting height positions the bottom edge of the RapidAlert unit 43 inches above the finished floor.

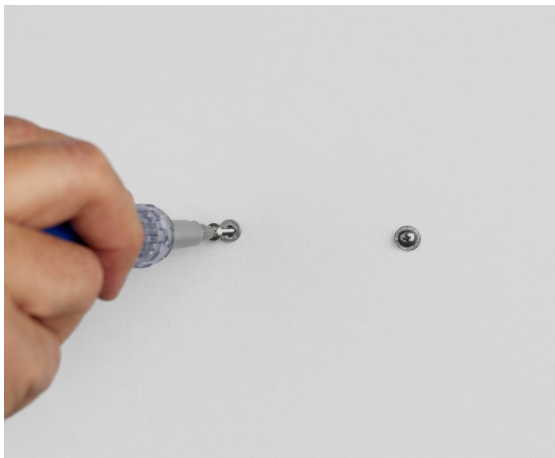
- 2 Use a level to ensure the template is properly aligned.
- 3 Drill 1/4-inch holes at the four marked mounting locations on the installation template.



**NOTE:** If using the rear cable entry, cut a 1 1/2-inch hole at the indicated location on the template.

**NOTE:** If mounting on drywall, secure at least one side of the cabinet directly into a wall stud, if possible, for added strength.

## 03 INSTALL WALL ANCHORS



- 1 Remove the installation template (M) from the wall.
- 2 For drywall installations, screw the drywall anchors (E) into the drilled holes using a Phillips screwdriver. They should be flush with the drywall.
- 3 For masonry installations, lightly hammer the plastic anchors (F) into the drilled holes until flush with the wall.
- 4 Install the two top mounting screws (G), leaving them approximately ¼-inch out from the wall.

## 04 MOUNT THE CABINET

- 1 If routing the power cable (I) through the rear of the cabinet on a drywall installation, feed the cable through the wall opening.
- 2 Insert the power cable (I) through the cord grip connector (H), leaving approximately 24 inches of cable inside the cabinet.
- 3 Tighten the cord grip connector (H) to secure the power cable (I) in place.



- 4 Hang the RapidAlert cabinet (A) on the top screws (installed at Step 3) using the keyhole slots.

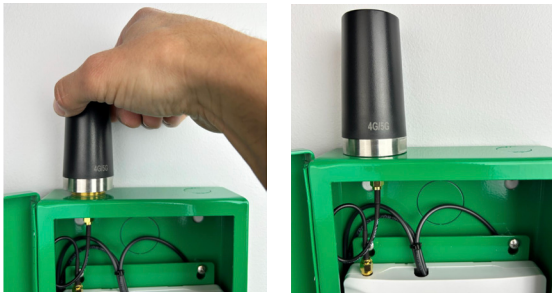


- 5 Install the bottom 2 screws, tighten all 4 screws, and ensure the cabinet is level.

## 05 REMOVE PROTECTIVE FILM

- 1 Once the RapidAlert cabinet (A) is securely mounted, remove the protective plastic film from the front panel.

## 06 INSTALL THE ANTENNA

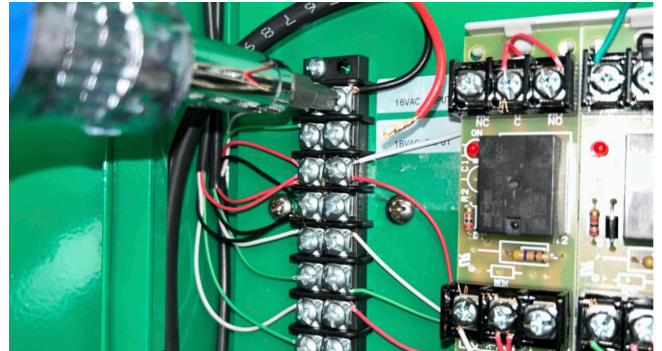
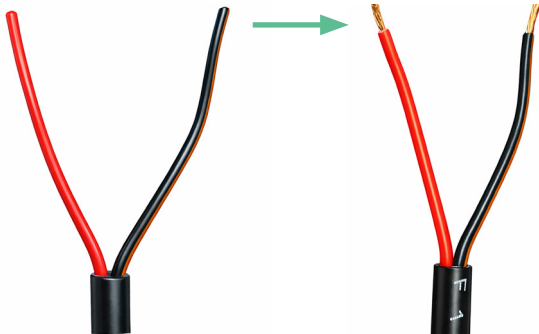


- 1 Thread the antenna (D) onto the antenna base located on the top of the cabinet.
- 2 Hand-tighten until snug. **Do not overtighten.**

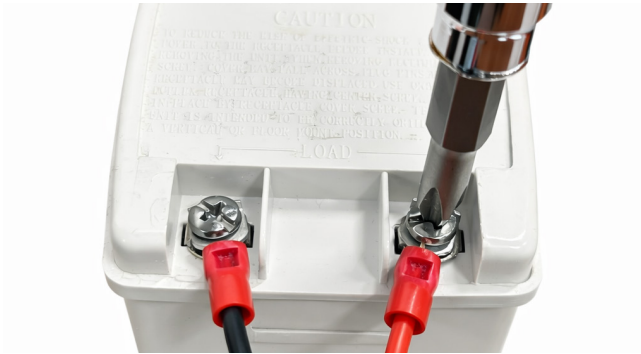
## 07 MAKE POWER CONNECTIONS



**WARNING** do not allow the power wires to touch each other or any other metal while the transformer is plugged in.



- 1 Strip approximately ½-inch of insulation from the red and black wires of the power cable (I).
- 2 Connect the red and black wires to the (2) terminals inside the cabinet labeled “AC Input.” Polarity does not matter.



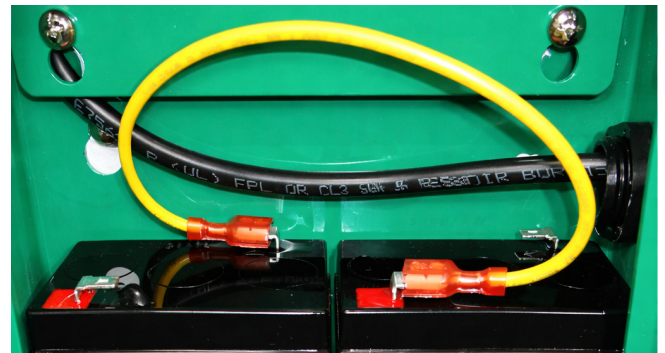
- 3 Connect the power cable (I) to the plug-in transformer (J) using the pre-installed terminals on the end of the power cable.



- 4 Plug the transformer (J) into a standard duplex (120 VAC) outlet and secure it using the retaining screw (included with the transformer).

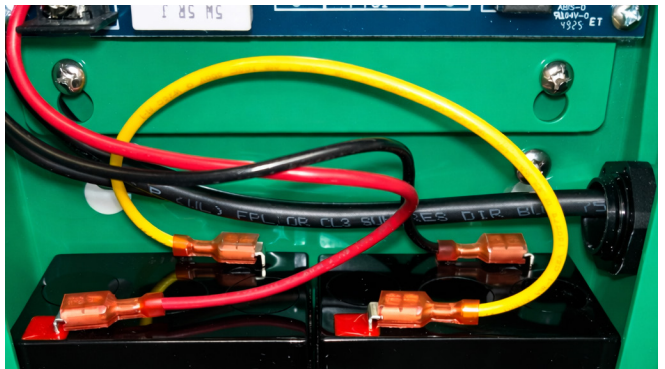


- 5 Place the (2) 6V batteries (K) into the bottom of the cabinet.



- 6 Connect the yellow jumper wire (L) between the red terminal of one battery and the black terminal of the other.

- 7 Connect the remaining red and black leads from the power supply (already installed in the RapidAlert cabinet) to the open battery terminals. Match the red lead to the unused red terminal and the black lead to the unused black terminal.



## 08 CLOSE THE CABINET

- 1 Close the RapidAlert cabinet and reinstall the three security screws that were removed in **Step 1**.

## 09 VERIFY SYSTEM STATUS

- 1 After the RapidAlert system is powered on, a green LED should appear on the right side of the cabinet.
  - A solid green LED indicates the system is powered and communicating properly.
  - A solid red LED indicates a communication issue. If cellular service is weak or unavailable, an Ethernet connection may be used.
  - If no LED is visible, there may be a power issue such as AC loss or a low battery.

**NOTE:** During the startup process, it is normal for the green LED to briefly turn off. After approximately 4 minutes, the green LED should remain on continuously.

## 10 VERIFY SYSTEM STATUS

- Notify the Campus Admin contact (provided on your RapidAlert New Account form) before testing.
- Activate the pull station by pushing in and pulling down on the handle.
- Verify that the strobe begins flashing and notifications are received by the Campus Admin contact
- Reset the pull station using the key (C) by turning counterclockwise 90 degrees, opening the pull station door 45 degrees, and then closing and re-locking the device.
- Confirm the strobe turns off after pull station reset.

## BRINGING THE SYSTEM LIVE (MONITORED SYSTEMS ONLY)

- Non-monitored systems are always active after installation.
- For monitored systems, please go to <https://bluepointalert.com/rapidalert> and click Account Testing at the top of the page to confirm installation completion and request system activation.